

# How to Make a ClayLinks® Print

Brought to you by CaringWisdom®

*A featured product line from World by the Tail, Inc.*



*Bereavement products for...*

Human Healthcare Providers: [www.caringwisdom.com](http://www.caringwisdom.com)

Veterinary Care Providers: [www.veterinarywisdom.com](http://www.veterinarywisdom.com)

# #1 Prepare the Clay



# Steps to prepare the clay

- Clean hands and any surfaces you'll be using to make the print  
*This modeling compound attracts dust, dirt and ink*
- Knead the clay patty before making the print  
*Distributing the compounds in the clay activates strong bonds when baked and ensures the long life of the print*
- Roll clay into a ball  
*Larger prints require more than one clay patty. See chart on next slide*

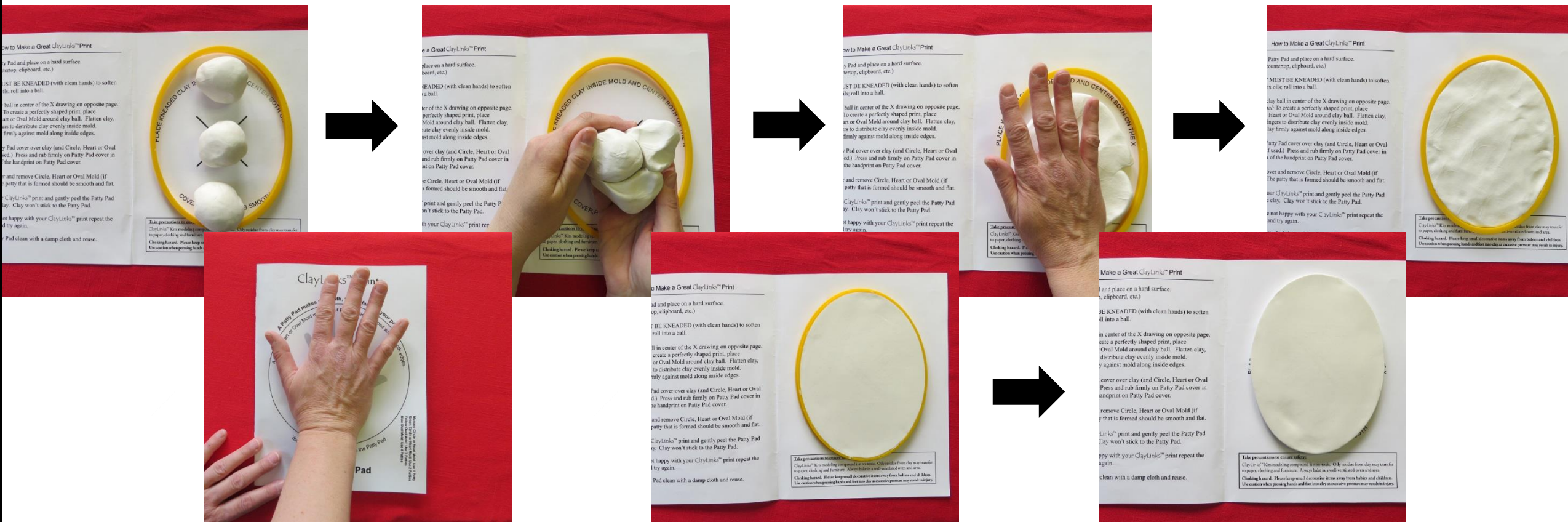


# Decide on size of print

Size of handprint	# of kits	ClayLinks® Mold we recommend
Babies	1	Maroon Circle /Heart
Children	2	Green Circle /Heart
Adult Female	3	Yellow Oval
Adult Male	4	Blue Oval

# Reshape clay into a patty

Place clay on hard, clean surface and flatten into a patty. Use our Patty Pads and Molds, if available, to smooth and shape clay



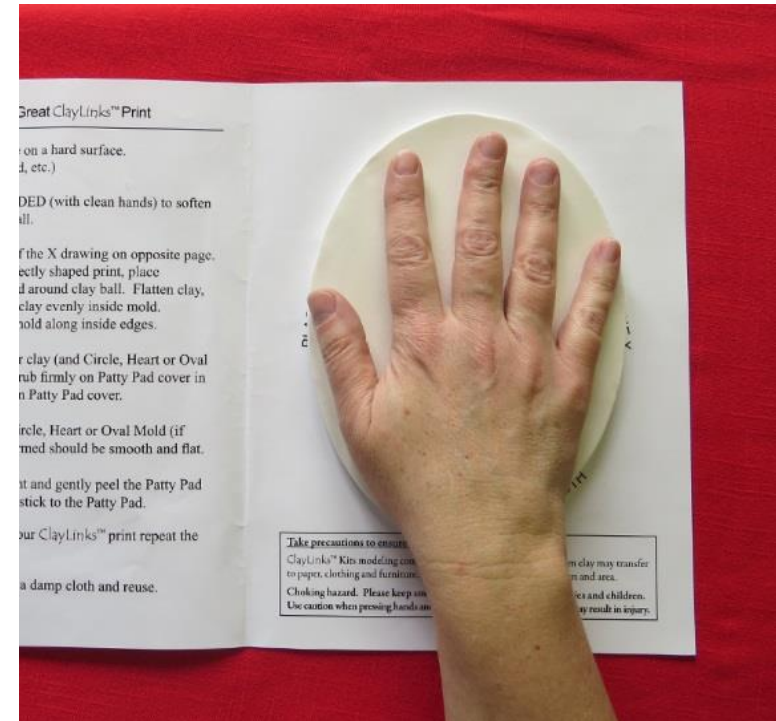


## #2 Make the Impression



# First

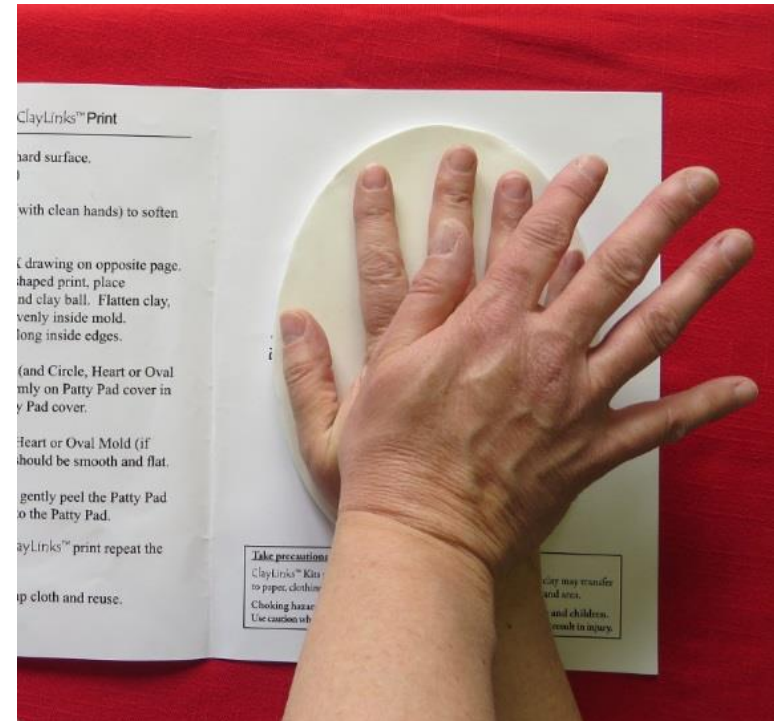
- Position the center of the palm on the lower half of the patty rather than the center to allow room for decorations





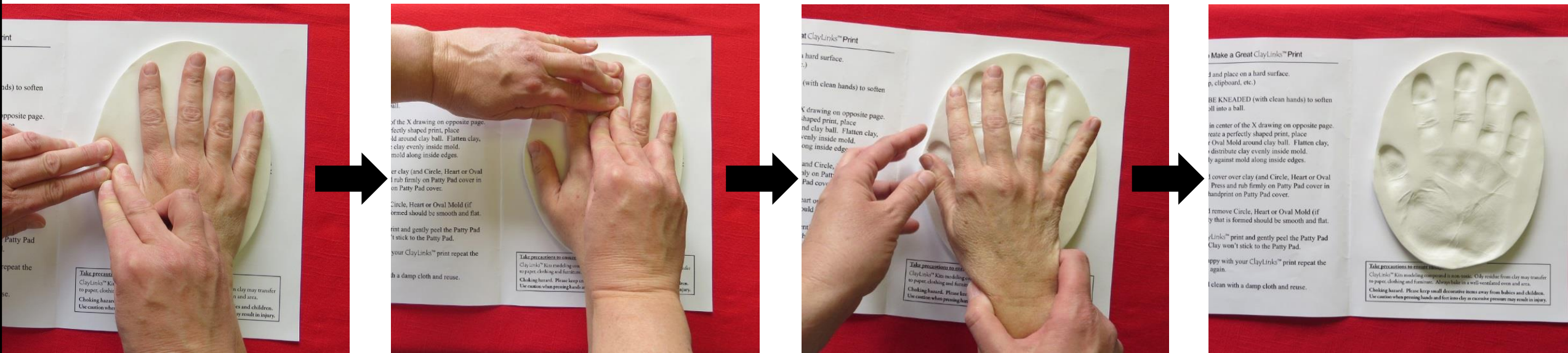
# Then

- Press firmly on back of hand
- Be sure to apply direct pressure above:
  - Palm of hand
  - Heal of hand



# Next

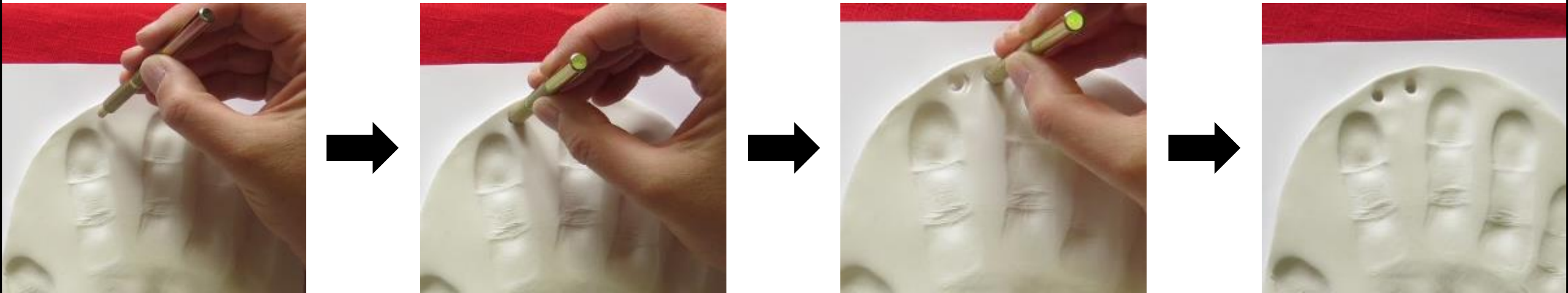
- Before removing hand, apply pressure to each finger individually



# #3 Add Decorations

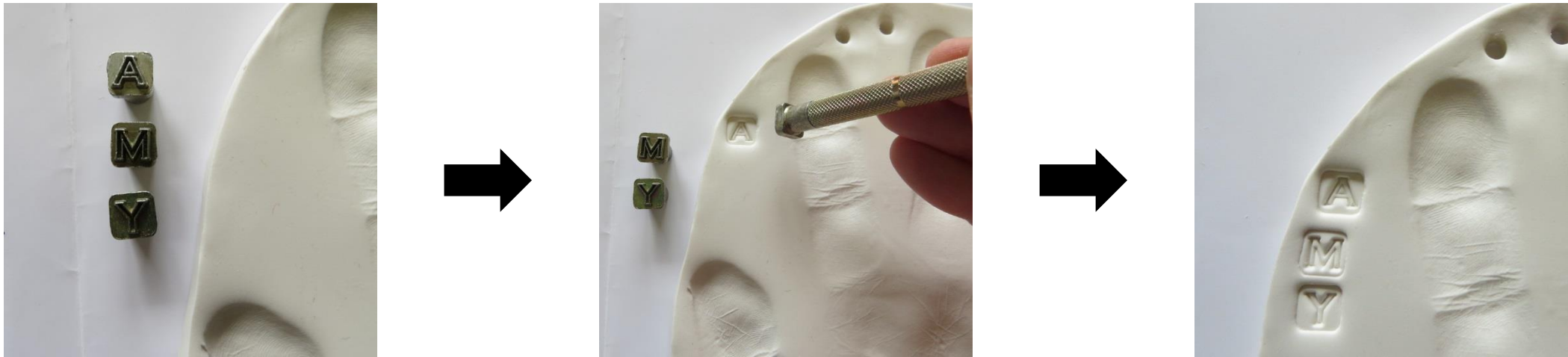


# Make holes for ribbon



*TIP! We use the handle from our stamp kits, but you can also use a match stick, stylus, crochet needle or toothpick. Make sure holes are large enough to thread the ribbon through after baking.*

# Add a name or dates



*TIP! We use our Alphabet and Number Stamp Kits, but you can also write names or dates with a toothpick or stylus.*



# Add press-in decorations

- Decorations must be able to withstand the baking temperature of 275° F

*TIP! Our handmade Decorative Charms are specially designed for ClayLinks® Prints!*





# #4 Bake Print



# Preheat oven

- Preheat conventional or toaster oven to 275° F (135° C)
- Do NOT use a microwave oven

*TIP! Use a separate oven thermometer to insure oven heats accurately.*



# Bake

- Place print on an ungreased baking pan
- Bake print at 275° F for 20 minutes

*TIP!* Bake print within 30 days of making print.



# Remove and cool

- Promptly remove the baking pan from the oven and allow print to cool to room temperature

*TIP!* *The print will continue to cure (harden) as it cools.*



# “Pop” print loose

- When the print is cooled to room temperature, use a spatula to gently “pop” it loose from the baking pan





# #5 Finish for Presentation

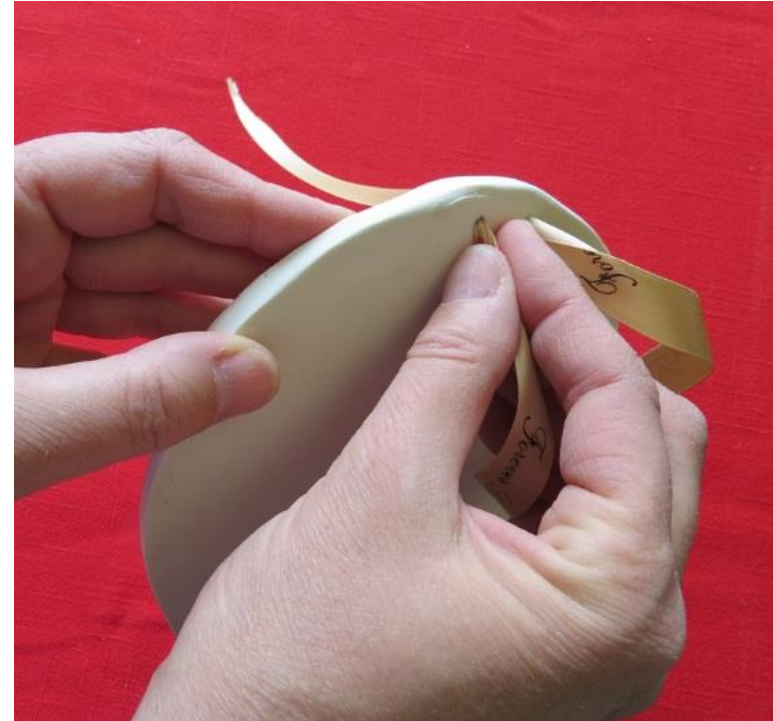




# Add final decorations

- Thread ribbon through pre-made holes to tie a bow or create a loop for hanging
- Apply finishing glaze made for use with polymer clay if desired

*TIP!* We use Sculpey® Gloss Glaze to add an extra shine to our prints.



# Presentation

- Complete the “send home” information sheet (ClayLinks® Kits main insert)
- Present to family



# If you have more questions

- Visit our website at [www.caringwisdom.com](http://www.caringwisdom.com)
  - Download our printable “Instruction Chart” from our homepage
  - Learn more in our “About ClayLinks® Kits” section
  - Get answers in our “FAQ’s” section

*TIP!* Follow “CaringWisdom” on your preferred platform

